

- Appendix A: Student Hands-up Survey
- Appendix B: Best Routes to School Map
- Appendix C: School Travel Action Plan
- Appendix D: Family Take-home Survey
- Appendix E: ASRTS Announcement
- Appendix F: School Travel Planning Membership
- Appendix G: Base Map
- Appendix H: Heat Map



HANDS-UP SURVEYS

Please complete this survey, using stand-up or hands-up methods (ask students to raise their hand's or divide in separate corners of the classroom) for the week of:

Monday October 24th 2016 – Friday October 28th 2016

Teacher: _____ Grade: _____ Division #: _____ # Students: _____

Ask students: "How did you travel to school this morning?"

	<i>Weather</i>	Walked /scooter	Walked part-way*	Bicycle	School Bus	Public Transit	Carpool (2 or more families)	Car (Just my family)	Other?	Total
Tues	Example: Rainy/6C									
Wed										
Thur										
Fri										
Mon										
Total										
Avg=Total/5 not for teachers										

Appendix A: Student Hands-up Survey

Ask students: "How will you travel from school today?"

	<i>Weather</i>	Walked /scooter	Walked part-way*	Bicycle	School Bus	Public Transit	Carpool (2 or more families)	Car (Just my family)	Other?	Total
Tue	Example: Rainy/6C									
Wed										
Thu										
Fri										
Mon										
Total										
Avg= Total/5 not for teachers										



**Doncaster
Elementary**
School Travel Planning

October 17, 2016

Dear Parent (Guardian):

Doncaster is taking part in the Capital Regional District's School Travel Planning process this school year to enable more students and families to walk, scooter or cycle on their journey to and from school.

The benefits of active school travel include:

- Increased safety
- Improved health
- Arriving alert and ready to learn
- Less stress, greater happiness
- Reduced traffic congestion near the school
- Less pollution

Please take 8 to 10 minutes with your child(ren) who attend this school to complete this survey. Your answers will help us better understand the travel choices made by families at Doncaster, with the purpose of improving the safety and health of the school community. **You only need to submit one survey per family and return it with your youngest child by October 20th, 2016.**

If you have any questions about the survey or the School Travel Planning project, please contact: Lindsay Taylor at lindsay@hastebc.org

Thank you,

Brenna O'Connor
Principal



To protect your privacy this survey does not require you to provide your name. *All information will be kept strictly confidential.*

A. Family Transportation Survey

Please include the date (month/day/year) that you filled this survey out

(e.g. October / 17 / 2016): _____/_____/_____

Please complete ONE survey per family.

1. How does your child(ren) **usually** get to and from school?
 (If two modes are common, e.g. *walking* and *driving*, choose the one they do **most often**.)

CHOOSE ONLY ONE BOX FROM EACH COLUMN

	TO school	FROM school
Walk / Scooter / Skate	<input type="checkbox"/>	<input type="checkbox"/>
Walk part-way (at least one entire block)	<input type="checkbox"/>	<input type="checkbox"/>
Bicycle	<input type="checkbox"/>	<input type="checkbox"/>
School bus	<input type="checkbox"/>	<input type="checkbox"/>
Public transit (BC Transit)	<input type="checkbox"/>	<input type="checkbox"/>
Carpool (2 or more families)	<input type="checkbox"/>	<input type="checkbox"/>
Car (just your family)	<input type="checkbox"/>	<input type="checkbox"/>
Other	<input type="checkbox"/>	<input type="checkbox"/>

If Other (explain) _____

2. Who usually accompanies your child on the way to school?
 Parent /Grandparent Other Adult Sibling Friend Child travels alone
3. How far away from school do you live? If you are not sure, check Google Maps.
 Less than 0.5 km 0.51 to 1.59 km 1.6 to 3 km Over 3 km
4. What language does your family speak at home?
 English Mandarin/Cantonese/Chinese Punjabi/Hindi
 Other please specify: _____

5. Please fill in the age and gender of your child(ren) attending this school.

Child	Age	Gender		
		Boy	Girl	Another Gender Identity
1		<input type="checkbox"/>	<input type="checkbox"/>	<input type="checkbox"/>
2		<input type="checkbox"/>	<input type="checkbox"/>	<input type="checkbox"/>
3		<input type="checkbox"/>	<input type="checkbox"/>	<input type="checkbox"/>
4		<input type="checkbox"/>	<input type="checkbox"/>	<input type="checkbox"/>

6. Our neighbourhood is safe for children to walk to and from school. (Please circle one answer).

STRONGLY AGREE AGREE DISAGREE STRONGLY DISAGREE

ONLY ANSWER Questions 7-9 if your child/ children are usually driven to or from school. If not, please skip to question 10

7. What are the main reasons your child(ren) is/are **usually** driven to/from school?
(Choose up to three)

- Distance from home too far
- Convenience/time pressures
- Traffic danger
- Personal safety issues (e.g. bullying, stranger danger, etc.)
- I'm on my way somewhere else (e.g. to work)
- Weather
- Other (explain) _____

8. I would allow my child(ren) to **walk** to school if... (choose up to three)

- He or she did not walk alone
- There was a safer or improved walking route
- There were reduced traffic dangers
- He or she were older
- He or she did not live so far from school
- Other (explain) _____

9. I would allow my child(ren) to **cycle** to school if... (choose up to three)

- They did not cycle alone
- There was a safer or improved cycling route
- There were reduced traffic dangers
- They were older
- They did not live so far from school
- They received bicycle safety training
- They could lock their bicycle in a safe place
- Other (explain) _____

Everyone continue at question 10 below

10. When you walk or cycle as a family, what motivates you? (choose up to three)

- Getting physical activity/exercise
- Environmental benefits
- Saving time
- Safer than driving
- More convenient than driving
- More fun than driving
- Cheaper than driving
- Setting a good example
- Not having to worry about parking
- Spending time outside
- Spending time with other people
- Other (explain)_____

11. Please share any further comments about your child's journey to and from school.

12. Do you support ongoing School Travel Planning efforts to make the school area safer, healthier and better connected to the community, reducing the number of children travelling to and from school by car?

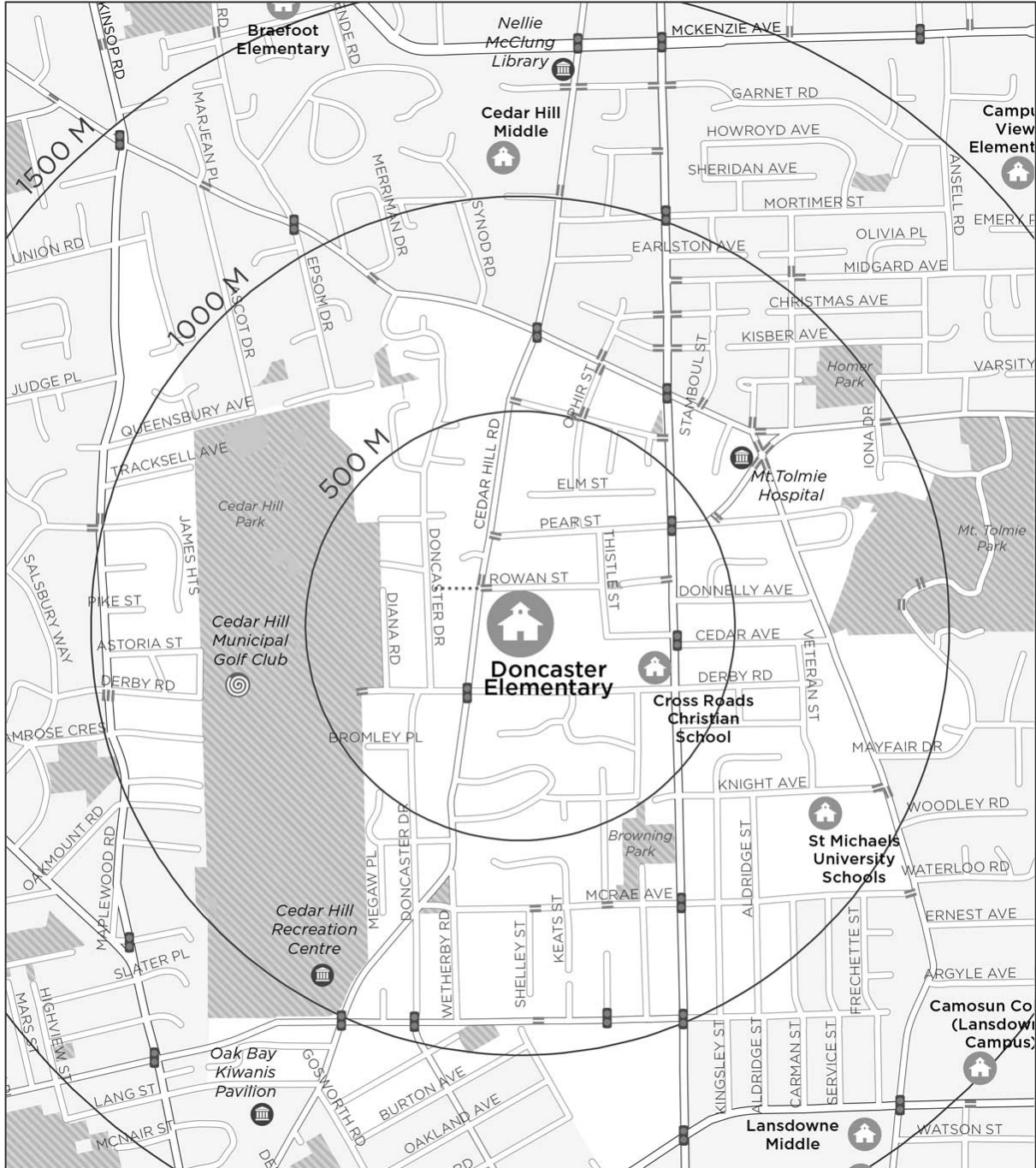
- YES NO

13. If you would like to help with School Travel Planning efforts at your school (for example attend Parent Advisory Council (PAC) Meetings or the school Walkabout), please provide your name, email and telephone (Optional: if you prefer to be called) below:

B. Walking / Cycling Routes to School

MAPPING EXERCISE: FOR PARENTS & STUDENTS TO ANSWER AS A FAMILY

Please complete the following map with the **WALKING** or **CYCLING** route your child/children take to get to and from school. If you usually drive please indicate the route **you would** walk or cycle. Identify any locations that are of concern to you with a number (e.g. 1, 2, 3) and describe these in the table below.



Describe any areas of concern in this table.

Location (e.g. nearest intersection)	What do you think is unsafe in this area?
E.g. on ___ Rd near ___ St	E.g. Cars turn right without looking for pedestrians.
1.	
2.	
3.	

THANK YOU FOR YOUR TIME. PLEASE HAVE THIS SURVEY COMPLETED ON THIS SHEET AND RETURNED TO SCHOOL BY OCTOBER 20th, 2016

HASTe BC (The Hub for Active School Travel) is the provincial lead for School Travel Planning in British Columbia: (www.hastebc.org)

School Travel Planning in the Capital Regional District is sponsored by:

- Victoria Foundation - www.victoriafoundation.bc.ca
- CRD Traffic Safety Commission
- Real Estate Foundation of BC - www.refbc.com

For more information please visit both of our websites or join us on Facebook or Twitter.



Appendix C: School Site Walkabout Summary

School: Doncaster Elementary School

Date/Time: Tuesday November 22, 2016

Weather: Rainy and Windy

Attendees: Principal, EA (School Ground Duty), 3 Parents + 1 CRD staff

Schools-Site Access

Discussion

- There are several school-site entrances surrounding the school grounds
- There is a fully accessible entrance on the corner of Cedar Hill Rd. and Rowan St. This entrance is accessible for strollers and scooters (Figure 1)
- The bicycle entrance to the school is the same entrance that cars use as the drop-off zone (Figure 2)
- There is a fence entrance off of Rowan that leads through the basketball court to the school. The entrance is hidden and uninviting (Figure 4)
- There is a dedicated pedestrian entrance beside the drop-off zone exit (Figure 3)
- There is a fence entrance off of Rowan that does not have a pedestrian path connected to it. It is not heavily used by students (Figure 5)
- Some students enter the school grounds through the staff parking lot as there are two pedestrian paths from the staff parking lot that lead to the school (Figure 9)
- There is a pedestrian path entrance leading from Thistle street that is heavily used by students (Figure 8)
- There are two school-site entrances on Cedar Hill Rd. – one of the two has a ramp for stroller, scooter and bicycle access (Figure 6 & 7)

Future Considerations/Solutions

- Consider creating a separate path dedicated for bikes beside the drop-off zone entrance (SD61)
- Consider marking entrances in paint to identify as a safe place to enter the school grounds (SD61)
- Consider creating a path from the fence entrance that currently does not have a path as an alternative to students walking through the staff parking lot (SD61)
- Consider creating a path around the staff parking lot that leads to the school and connect with the existing pedestrian paths (SD61)



Figure 1 - Entrance on corner off Cedar Hill and Rowan



Figure 2 - Drop-off zone entrance



Figure 3 - Drop-off zone exit



Figure 4 - Basketball court entrance off Rowan



Figure 5 - Fence entrance with no pedestrian path



Figure 6 - First entrance from Cedar Hill



Figure 7 - Second entrance from Cedar Hill



Figure 8 - Entrance from Thistle St. Subdivision



Figure 9 - Entrance to staff parking lot

Pedestrian Pathways

Discussion

- There is a concrete pedestrian path surrounding the school that provides access to each of the building entrances. Students are not to use the front door entrance to the school.
- There is an accessible concrete pedestrian path leading from the school-site entrance on the corner of Cedar Hill and Rowan. This path can be used by strollers and scooters (Figure 1)
- There is a concrete path leading from the basketball court entrance, through the court and over a speed bump in the drop-off zone to the school. The path is not well marked and cars are not looking for students coming through the basketball court (Figure 4 & 14)
- There is a concrete path starting at the exit of the drop-off zone that is suitable for pedestrians and strollers (Figure 3)
- There are two pedestrian paths that lead from the staff parking lot to the school – one is a concrete path and the other leading to the back of the school is a gravel path (Figure 11 & 12). The gravel path has a chain to block cars from driving onto the school grounds, but is also not welcoming for pedestrians (Figure 11)
- There is a concrete pedestrian path that leads from the Thistle St. subdivision to the school that is accessible for pedestrians and strollers (Figure 8)
- Biking on school grounds is currently prohibited, students are asked to dismount and walk their bikes on school grounds

Future Considerations/Solutions

- Consider painting a footprint path through the basket-ball court and treating the speed bump the same way a crosswalk is treated (SD61)
- Consider creating a dedicated path for bikes leading to the front of the school (SD61)
- Consider changing the school policy to allow students to ride bikes on school grounds (Doncaster)



Figure 10 - First pedestrian path from staff parking lot to school grounds



Figure 11 - Second pedestrian path leading from staff parking lot to school grounds



Figure 12 - Speed bump - part of pedestrian path from basketball court

Potential Conflicts

Discussion

- Parking signs along Rowan are confusing (Figure 13)
- There are safety concerns due to parents are parking on both sides of Rowan – only one car can get through at a time
- Visibility concerns due to parents parking close to drop-off zone entrances and exits – difficult to see pedestrians and cars are forced to pull out of drive way in order to see traffic
- School zone sign is located before the light on Cedar Hill and Derby – cars are going downhill, picking up speed and often forgetting about the school zone sign
- Parents using staff parking lot as a drop-off zone
- Conflicts between cars and pedestrians who are walking through the basketball court as cars are not looking for pedestrians coming through that access point

Future Considerations/Solutions

- Seek clarity regarding parking on Rowan St. and appropriate signage to accompany (Saanich)
- Consider using yellow and white paint to identify areas where parents are allowed and not allowed to park (Saanich)
- Consider installing a second school zone sign after the Cedar Hill Rd. and Derby St. intersection (Saanich)
- Consider creating an education campaign to inform parents of alternative drop-off locations (Doncaster & STP Facilitator)
- Consider implementing a drive to five program from alternative drop-off locations - possible student leadership opportunity (Doncaster & STP Facilitator)

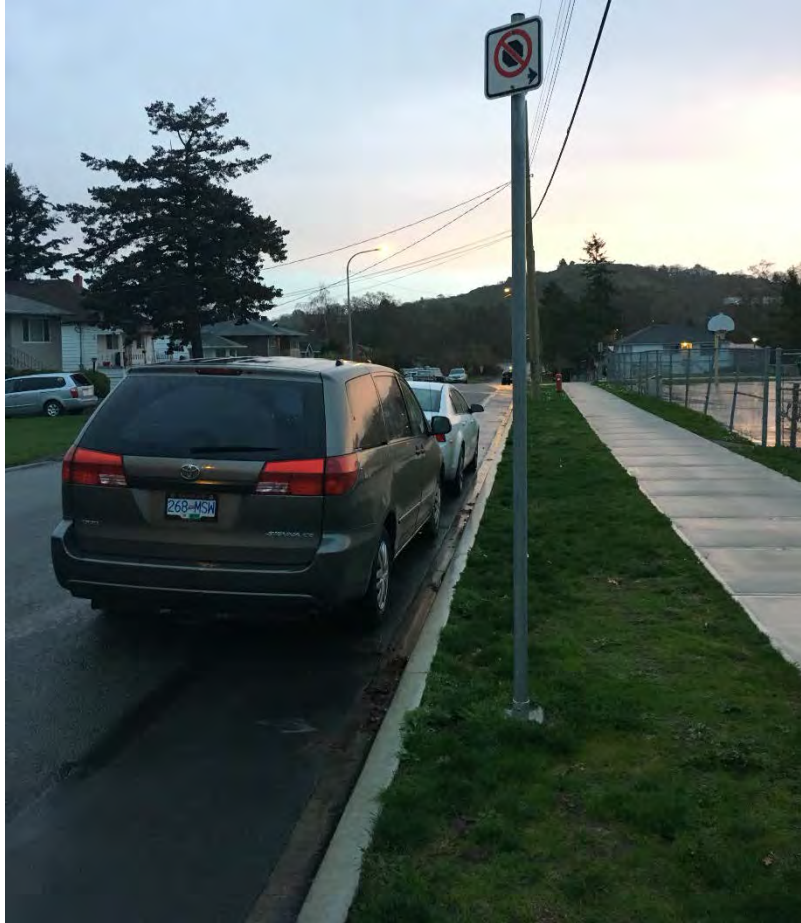


Figure 13- Parking sign on Rowan St.

Bicycle Parking

Discussion

- Three bike racks are located at the front entrance of the school in a visible and well-lit location
- Students must dismount and walk bike to bike rack area
- There is ample bike parking to accommodate a large number and sizes of bikes
- Bicycle parking is not covered
- An additional bike rack is located at the back of the school in a visible and well-lit location. This rack can accommodate about 8-10 bikes and is not covered
- Students who forgot to bring a lock to school can bring their bikes to the courtyard in the middle of the school
- There is no scooter or skateboard parking available, students bring their scooters/skateboards to class to store for the day

Future Considerations/Solutions

- Consider installing a shelter for covered bike parking (SD 61)
- Consider moving the back bike rack to the covered area at the back of the school to provide some covered bike parking (SD61)

- Consider installing skateboard/scooter parking (SD61 or STP Facilitator)



Figure 14- Bike racks located at the front of the school

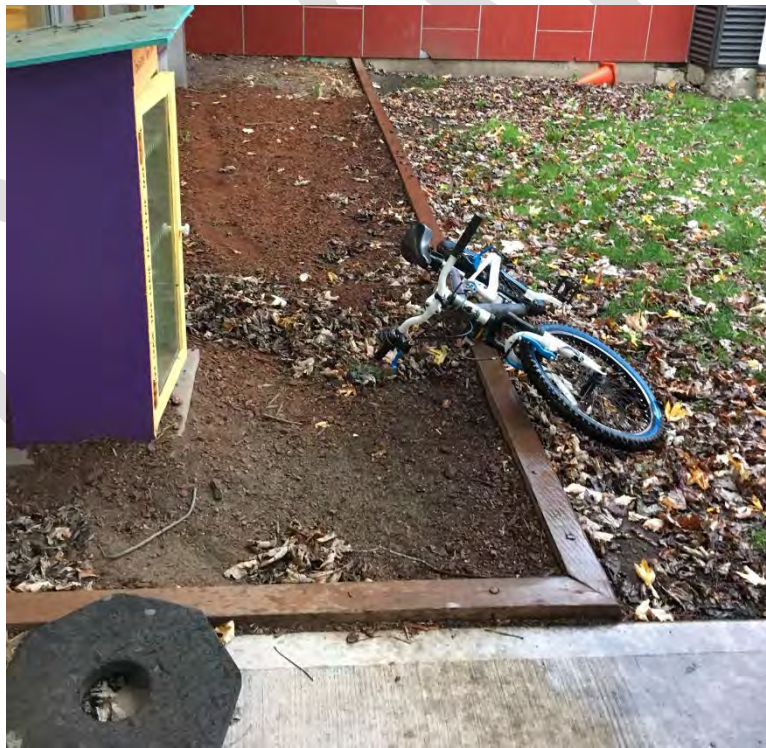


Figure 15- Bikes in the courtyard



Figure 16- Potential covered bike parking location

DRAFT

Appendix D: Neighbourhood Walkabout Summary

Monday February 27, 2017 at 7:30 am

Weather: Cold & Light Snow

Rowan & Cedar Hill

Discussion

- Busy intersection
- High speeds – cars travelling over 30 km/h
- Confusion re: parking on Rowan St.
- No dedicated space for cyclists to enter school grounds
- Parents parking in Cedar Hill bike lane

Considerations/Possible Solutions

- Create a dedicated space for cyclists to enter school grounds beside vehicle entrance for drop-off loop (SD63)
- Increase enforcement efforts re: stopping in bike lane on Cedar Hill (Saanich Police)

Pathway from Cedar Hill to Doncaster

Discussion

- Great connector between Doncaster Street and Cedar Hill
- Narrow path, steep grade and sharp turn along path – difficult for cyclists (Figure 1)
- Parents parking in front of path to walk students to school

Considerations/Possible Solutions

- Install signage to mark path (Saanich)
- Widen path to accommodate multiple users (Saanich)
- Remove sharp turn and straighten path (Saanich)
- Paint curb to not allow parking in front of the path (Saanich)



Figure 1 - Pathway from Cedar Hill to Doncaster

Doncaster Dr. & Derby

Discussion

- No sidewalks on Doncaster (when asked to choose participants reported they would prefer increasing the sidewalk width on Cedar Hill; in survey more families used Cedar Hill)
- Pedestrian crossing in the middle of Doncaster Dr. with no purpose
- Vehicles driving fast towards golf course
- Vehicles turning right at from the south side of Doncaster Dr. onto Derby are not coming to complete stop at stop sign (Figure 2)

Considerations/Possible Solutions

- Increase enforcement efforts re: full stop at Doncaster & Derby (Saanich Police)
- Facilitate discussion with golf course to remind golfers that they are in the area of a school and there are students in the area (STP)



Figure 2 - Doncaster & Derby West Intersection

Cedar Hill Golf Course Path

Discussion

- Great connector between Maplewood and Derby
- Conflicts between path users and golfers
- Possible 'Drive to 5' location on other side of golf course

Considerations/Possible Solutions

- Upgrade the main trail from east to west across the golf course (Saanich)
- Educate re: 'Drive to 5' location and highlight on best routes map (STP)
- Facilitate discussion with golf course and school re: sharing the path and courteous behaviour (STP)

Derby & Cedar Hill Intersection

Discussion

- Sidewalk drops off into road area on all sides of the intersection
- There's no dedicated/protected space for pedestrians to wait to cross the road (Figure 4)
- Sidewalk is narrow on east side of Derby and on south west side leading to rec centre (Figure 5)
- Bike trigger needs to be repainted for cyclists to know where the spot is to trigger the light

- School zone sign is located before the intersection and drivers are forgetting they are entering a school zone
- No audible signals intersection to let people know the button has been pressed to change the light and to let people know when to walk
- Not enough time for pedestrians and cyclists to cross intersection
- Difficult for students on bikes to travel south to Derby from school as no bike facilities exist.

Considerations/Possible Solutions

- Improve pedestrian waiting area at intersections by extending the sidewalk with proper curbs to create a safe place to wait at the intersection (Saanich)
- Install a multi-use path on Cedar Hill from Derby to Rowan to accommodate and create a comfortable and safer space for cyclists and pedestrians (Saanich)
- Install accessible audible signals at intersection to let pedestrians know when they have pushed the button and when to cross (Saanich)
- Move school zone sign to white fence area (Figure 3) and install a “School Zone Ahead” sign where current sign is before the intersection (Saanich)
- Repaint bike trigger on Derby (Saanich)
- Adjust signal timing to increase the amount of time for pedestrians and cyclists to get through the intersection (Saanich)
- Educate students on bike trigger (STP)



Figure 3- Proposed School Zone Sign Location



Figure 4 - Pedestrian Waiting Area - Doncaster & Derby Intersection (north side)



Figure 5 - South Side of Doncaster & Derby Intersection

Shelbourne & Cedar Ave.

Discussion

- Pedestrian controlled traffic signal
- High speeds – lots of cars
- Wide road – difficult to cross
- No crossing guard
- Crosswalk lines are faded
- Drivers do not realize there is a school in the area

Considerations/Possible Solutions

- Re-paint crosswalk lines at intersection (Saanich)
- Shelborne Valley Action plan – improvements made along Shelborne Corridor – plan includes improved cycling (5ft wide bike path) and pedestrian facilities (5ft wide sidewalk) moved off street to provide safe space for users (Saanich)
- Future design of intersection should consider school active travel (Saanich)
- Review signs to indicate that the area is a school zone

Pear St.

Discussion

- No dedicated space for pedestrians or cyclists on Pear St.
- Traffic and high speeds of concern

Considerations/Possible Solutions

- Install pedestrian and cycling infrastructure on Pear St if warranted(Saanich)
- Infrastructure design to discourage through traffic cut throughs (Saanich)

Thistle St.

Discussion

- No dedicated space for pedestrians or cyclists on Thistle (Figure 6)
- Number of cars driving towards the school

Considerations/Possible Solutions

- Install pedestrian and/or cycling infrastructure on Thistle from Rowan to Pear (Saanich)



Figure 6 - Thistle Street leading to Doncaster Elementary

Other

- Saanich long term plan to extend Bowker Creek Greenway Trail to Cedar Hill X – would provide more comfortable off-street route for students south of Doncaster Elementary
- Shelborne Street Church of Christ identified as potential 'Drive to 5' location (talk to church and add to best routes map)
- Shelborne & McRae – crosswalks on all legs as part of Shelborne Valley Action Plan
- Draft information piece re: not having to dismount from bike on school property, reinforce respect and shared space
- Identify all 'Drive to 5' locations and paths for best routes map
- Promote 'Drive to 5' locations with celebration stations during Bike to School Week or Walk and Wheel Wednesdays
- Bring bike repair workshop to school during Bike to Work Week (Velofix)



Active & Safe Routes to School



Appendix E: School Travel Action Plan

School Travel Action Plan: Doncaster Elementary School

The purpose of this Action Plan is to identify and prioritize engineering, encouragement and enforcement actions aimed at creating a safer and more comfortable environment for students to walk, bike or roll to school. This Action Plan is a living document belonging to the school. It should be revisited regularly in order to update the status of Action Plan items and incorporate new or revised actions.

Doncaster Elementary is part of School District 61 and is located at 1525 Rowan Street in Saanich.

Doncaster Elementary School is a dual track French Immersion / English school in Saanich. There are 430 students enrolled from Kindergarten through Grade 5.

MAIN ISSUES/AREAS OF CONCERN

- Vehicle speeds on Cedar Hill Rd.
- Lack of pedestrian infrastructure at the Derby and Cedar Hill intersection
- Safety concerns with vehicle traffic heading to Cedar Hill Golf Course
- Vehicle speeds along Shelbourne St.
- Lack of pedestrian and cycling infrastructure on Pear St.

BASELINE MODAL SPLIT (OCT 2016)

Walk/Scooter/Skate	28%
Walk part-way	2%
Bike	13%
School Bus	1%
BC Transit	3%
Carpool	3%
Drive	50%

GOALS

- Build confidence to use active modes of transportation
- Improve walking routes to school
- Improve cycling routes to school
- Improve traffic safety in the school zone
- Encourage uptake of active travel to and from school



Active & Safe Routes to School



School Travel Action Plan: Doncaster Elementary School

October 30, 2017

School Travel Planning Facilitator					
Action	Description	Status	Anticipated Completion	Next Steps	Notes
Baseline Survey	Distribute, collect and analyze survey. Summary presentation created and presented to PAC. Summary also presented to SD61 and Saanich staff.	Complete	December 2016		
School Site Walkabout	Facilitate school site walkabout. Create and distribute walkabout summary to administrators and PAC, SD61 and Saanich staff.	Complete	November 2016		
Survey and Walkabout Summary	Present survey and walkabout summary to PAC and School Administration.	Complete	February 2017		
Neighbourhood Walkabout	Facilitate a discussion with school administration, Saanich municipal staff and parents.	Complete	February 2017		Walkabout notes sent to Saanich for review. Edits received and included.
'Drive to 5' Program	Formalize a 'Drive to 5' program at Cedar Hill Golf Course.	In Progress	October 2017		
Bike Skills Course	Bike skills course for up to 24 students.	In Progress	November 2017		
Bike to School Week Support	Provide support events during the week.	Complete	May 2017		CRD covered the costs of Mountain Equipment Co-op's Bike Maintenance Clinic and After

Action	Description	Status	Anticipated Completion	Next Steps	Notes
					School Safety Checks.
Program Re-Introduction	Re-introduce program to PAC and new parents at Doncaster.	Complete	September 2017		Newsletter information sent out to parents.
Walk & Wheel to School Week	Support a Walk and Wheel to School Week campaign and celebration.	Complete	October 2017		Blender bike provided as a celebration station.
Action Plan	Monitor action plan and update actions and notes throughout school travel planning process.	In progress	November 2017		
Follow-up Survey	Distribute, collect and analyze follow-up survey. Create and present summary presentation to PAC, SD63 and District of North Saanich staff.	Not started	November 2017		

Doncaster Elementary (PAC & Principal)					
Action	Description	Status	Anticipated Completion	Next Steps	Notes
Bike to School Week	Continue promotion of Bike to School Week campaign. Compare statistics with previous years.	Complete	June 2017		
Best Routes Map Promotion	Include Best Routes Map in materials for new parents and hang large map in visible place before school starts in September.	Complete	September 2017		
Walk and Wheel to School Week	Celebrate Walk and Wheel to School Week by hosting event and celebration activities.	Complete	October 2017		

Greater Victoria School District (SD 61)					
Action	Description	Status	Anticipated Completion	Next Steps	Notes

Action	Description	Status	Anticipated Completion	Next Steps	Notes
Review Survey & Walkabout Summary Presentation	Review presentation and provide suggestions on which areas of concern school district can address.	Complete	February 2017		
Identify pedestrian entrances/pathways to school	Consider painting pathways and installing signage to identify pedestrian pathways leading to school through basketball court (specifically footprints in bright paint to increase visibility).	Not Started	September 2017		
Bike Entrance to School	Establish a specific bicycle entrance leading to the school and promote/educate students and parents.	Not Started	May 2017		Liaise with parents and school staff to identify preferred entrance for bikes.
Bike Parking	Install additional bike parking in the covered location at the front of the school.	In Progress	November 2017		

District of Saanich

Action	Description	Status	Anticipated Completion	Next Steps	Notes
Review Survey & Walkabout Summary Presentation	Review presentation and identify appropriate municipal involvement and alignment with other plans and infrastructure.	Complete	January 2017		
Path from Doncaster to Cedar Hill	Widen path to accommodate multiple users, install signage to mark path, remove sharp turn and straighten path and paint curb to not allow parking in front of path.	Not started			Added to District's sidewalk priority list. As budgets and priorities permit.
Cedar Hill Golf Course Path	Upgrade the main east to west trail across the golf course.	Not started			Added to District's sidewalk priority list. As budgets and priorities permit.
Derby & Cedar Hill Intersection	Upgrade intersection with pedestrian facility improvements (this may	Not started			Added to District's crosswalk priority

Action	Description	Status	Anticipated Completion	Next Steps	Notes
	include: extending sidewalk with proper curbs in waiting area section, consider installing a multi-use path from Derby to Rowan, install accessible audible signals at intersection, repaint bike trigger on Derby and adjust signal timing).				list. As budgets and priorities permit.
Cedar Hill school zone sign	Move school zone sign to white fence area.	Complete	April 2017		
Shelbourne & Cedar Ave. Intersection	Re-paint crosswalk lines at intersection. Include school travel considerations in future design in the Shelbourne Valley Action Plan. Review signs along Shelbourne to indicate that the area is a school zone.				Has been included in the Shelbourne Street Concept. Will be completed as part of the Shelbourne Street Construction.
Pedestrian & Cycling Infrastructure on Pear Street	Install pedestrian and cycling infrastructure on Pear Street or install infrastructure designed to discourage traffic cut throughs.				Cycling infrastructure projects will be prioritized upon completion of the Districts Active Transportation Plan.
Pedestrian and/or Cycling Infrastructure on Thistle Street	Install pedestrian and/or cycling infrastructure on Thistle from Rowan to Pear.				Cycling infrastructure projects will be prioritized upon completion of the Districts Active Transportation Plan.
McRae & Shelbourne Intersection	Install crosswalks on all legs of intersection as part of the Shelbourne Valley Action Plan.				Has been included in the Shelbourne Street Concept. Will be completed as part of the

Action	Description	Status	Anticipated Completion	Next Steps	Notes
					Shelbourne Street Construction.

Saanich Police					
Action	Description	Status	Anticipated Completion	Next Steps	Notes
Stopping/dropping students off in the bike lane on Cedar Hill Rd.	Increase enforcement efforts and educate parents re: legality of parking in the bike lane. Implement soft enforcement campaign providing information on alternative drop-off locations	Not started	November 2017	STP to draft information re: legality of parking in the bike lane and alternate drop off zones.	

SUPER Road Cycle Safety

Signs: Use your hand signals when turning, slowing down or stopping. Follow all posted signs and obey the traffic laws.

Urban Awareness: See and be seen! Be aware of your surroundings. Wear light or bright coloured clothing, and use your lights and reflectors in low-light and at night.

Protection: It's the law to wear your helmet when riding – plus it protects your brain!

Eye contact: Communication is key! Make eye contact with other road users such as drivers and cyclists, especially when crossing intersections.

Right hand side: Ride single file and on the right-hand side of the road. Always leave one door length of space when riding next to parked cars.



Use Your Street SMARTS

Sidewalks: Walk on the sidewalks, if possible. Stay on the inside edge, and stand back from the curb when waiting to cross the street. No sidewalk? Walk facing traffic so you can see approaching vehicles.

Music: If you are listening to music, remove an ear piece before crossing the street or walking in less populated areas.

Attention: Look out for moving vehicles at driveways, back lanes, and in parking lots.

Road Crossing: Always cross at an intersection or crosswalk if available. Make eye contact with the drivers to make sure you are seen. Be bold; extend your arm to indicate you want to cross!

Team-Up: It is safer and fun to walk to school with family or friends.

Stranger-aware: Do not go with a stranger. Practice and remember a special family password that only a trusted adult knows. With your family, identify safe places to go for help.



Doncaster Elementary

September 2017

Best Routes To School Map

Drive to Five – It's a 5-Minute Walk to School

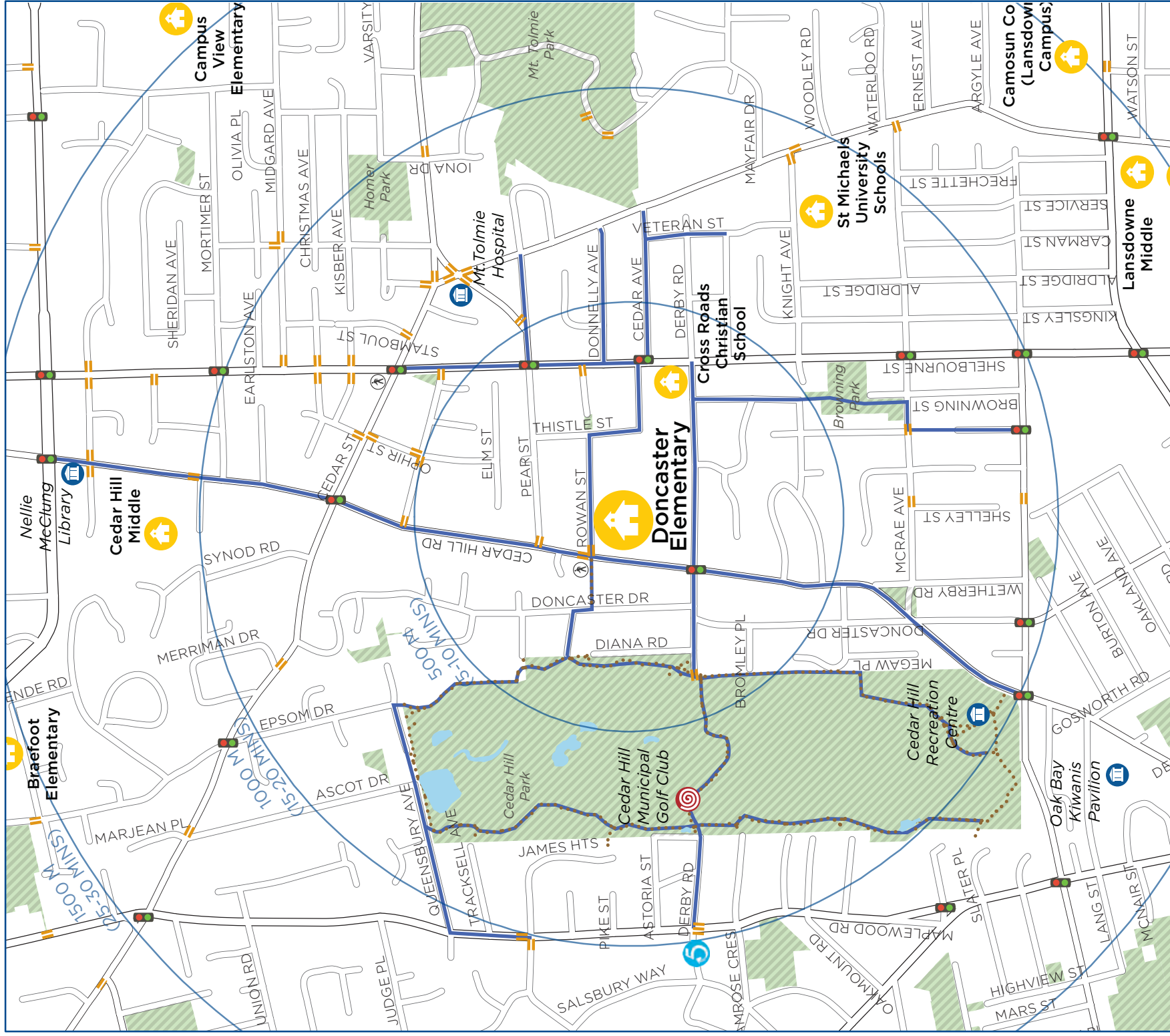
5 Look for this location on your Best Routes to School Map.

Too far to walk or cycle? Stretch your legs and help relieve traffic congestion around your school by parking or dropping off at least five minutes away from school.

The Best Route To School map is a product of the Capital Regional District's 2016-17 Active and Safe Routes to School program, to encourage and enable students and families to walk, bike and roll to and from school. The program is funded by the Capital Regional District, the Real Estate Foundation of BC and the CRD Traffic Safety Commission, and delivered by HASTe, the Hub for Active School Travel. Visit crd.bc.ca for more information.



Best Routes to School are developed based on information we've received from parents, your school community and the municipality's transportation department. They are chosen to use the safest crossing points and to enable more people walk and cycle together.



Doncaster Elementary: Best Route to School Map September 2017

The Capital Regional District (CRD) does not warrant or guarantee the safety or suitability of any route depicted. This information is provided for general information purposes only and the use of this document by any person or entity will be entirely at their own risk.

- Best Route
- Trail
- Crosswalk
- Crossing Guard
- School
- Traffic Signal
- Drive to 5
- Park
- Municipal
- Recreational/Cultural



Meters

Appendix G: Drive to 5 Newsletter Content

Drive to 5

An exciting new program will be launching in October called Drive to 5. This means that parents/guardians have the opportunity to drop students off at a location that is about a 5 minute walk to school. This gives students a great opportunity to get some fresh air in the morning and start their day off with some physical activity. This also helps clear up traffic congestion around the school, making it safer for students to walk and wheel to school. The location will be the Cedar Hill Golf Course.

Parking on Cedar Hill Road

When dropping off or picking up your children at Doncaster, please ensure that you are not parking in the bike lane on Cedar Hill Road. Doncaster encourages active travel to school, and parking in the bike lane makes this very problematic.

Looking for another place to drop students off? The Cedar Hill Golf Course is a good opportunity to avoid traffic congestion around the school, and making it safer for students walking or wheeling to school. The Cedar Hill Golf Course is Doncaster's Drive to 5 location. The Drive to 5 Program encourages parents to drop students off at a location that is about a 5 minute walk to school. Not only does this alleviate traffic congestion problems around the school, but it gives students an opportunity to get some fresh air and some exercise.

Appendix H: ASRTS Announcement

Active and Safe Routes to School

Active & Safe Routes to School is a community-based initiative that promotes the use of active transportation (walking, biking, bussing and rolling) for the daily trip to and from school. The program addresses health, physical activity, and traffic safety issues while tackling air pollution and climate change.

The program began last fall with baseline surveying followed by action planning. We are currently in the education and encouragement phase of the program.

This Fall

Walk and Wheel to School Week, October 2-6

During this week, students are encouraged to walk or wheel to school for all or part of their trip. The school will have a poster can be used to track the number of students walking or wheeling to school.

This week provides a great opportunity for fun activities and other encouragement. The blender bike will be making its way around for students to make some smoothies.

Drive to 5

With Walk and Wheel to School Week, a Drive to 5 Program will be launched. Drive to 5 is where parents can drop their children off at designated locations that is within a 5 minute safe and comfortable walk to school. Parents can either park and walk with their children or drop them off.

The Drive to 5 location will be at the Cedar Hill Golf Course parking lot.

Follow-Up Survey

The follow-up survey will be administered mid/late October. This survey will compare results against the baseline survey distributed last fall to measure the impact the program had on influencing the rate and attitude towards active travel in your school community.

If you have questions, or would like to know more contact your School Travel Planning Facilitator, Melissa Coates, at mcoates@crd.bc.ca